

Precise 3D printer Planmeca Creo™

Brand
new!



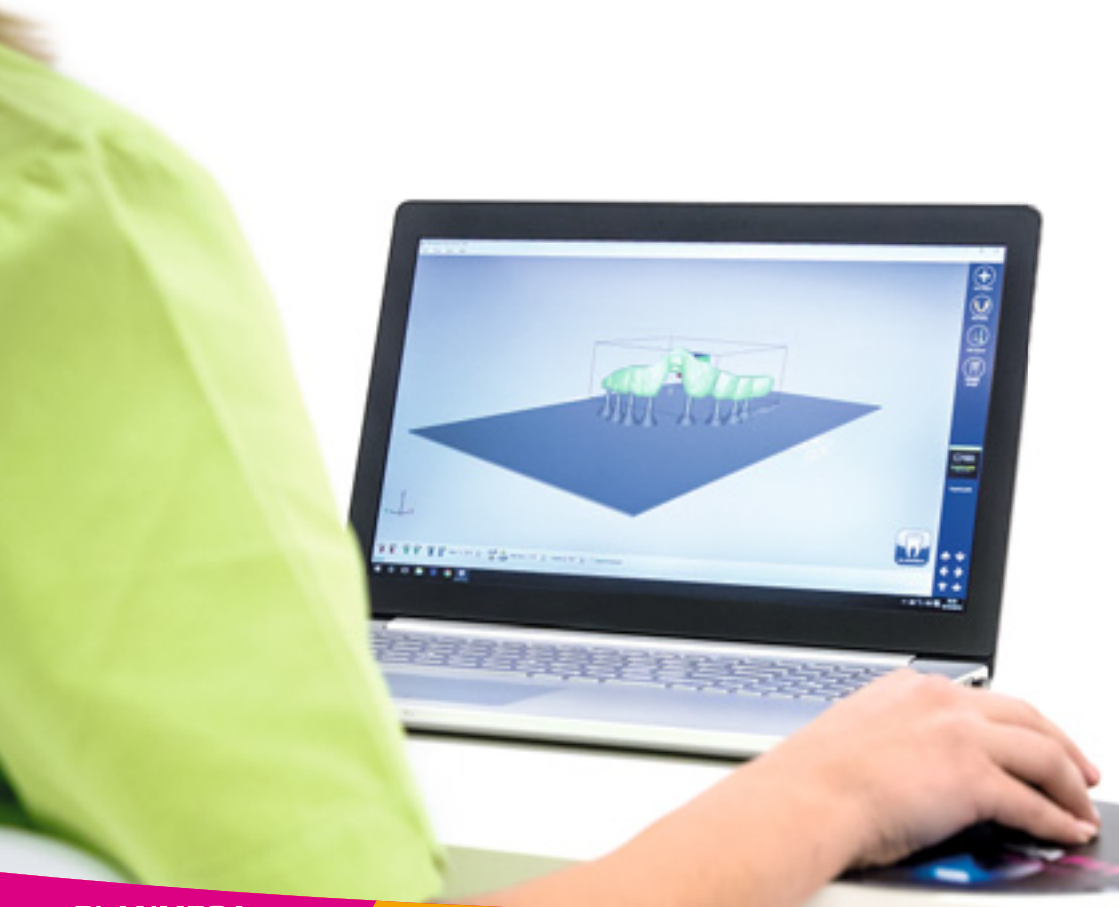
ENGLISH

PLANMECA

Create your vision

Planmeca Creo™ is our new 3D printer for creating dental objects such as models and surgical guides with true precision and efficiency. It is the perfect tool for dental labs and large clinics aiming to expand their production capabilities and increase efficiency.

Enjoy the freedom to print objects from different design software with an open interface for STL imports!



Main features

- High-quality dental applications from medically approved materials
- Completes Planmeca's seamless digital workflow
- In-house printing lowers costs and saves time
- Efficiency with the latest DLP (Digital Light Processing) technology
- Current printing times (horizontal printing):
 - Dental models: 2 hours
 - Surgical guides: 45 minutes
- Large printing area:
 - Fits up to 6 dental models or 25 surgical guides at the same time
- Dedicated Creo Studio software

Materials

- Dental models
- Surgical guides



More materials coming soon

- Dental splints
- Cast models
- Individual impression trays
- Temporary crowns and bridges



Technical specifications

Print technology	Digital Light Processing (DLP)
Resolution (XY)	68 µm, 1920 x 1080
Layer thickness	50 µm (possible to adjust between 5–200 µm)
Light source	LED
Guaranteed LED life	5,000 hours
Build volume	130 x 81.5 x 130 mm (5.1 x 3.2 x 5.1 in.)
AC input	100/240 V
Weight	30 kg (66 lbs)
Dimensions (W x H x D)	42 x 72 x 32 cm (16.5 x 28 x 12.5 in.)
Minimum required clearances	Front: 50 cm (19.7 in.) Sides: 10 cm (3.9 in.) Rear: 5 cm (2 in.) Top: 10 cm (3.9 in.)
Operating temperature	15–32°C (60–90°F)
Materials from	Planmeca

PLANMECA

Asentajankatu 6 | 00880 Helsinki | Finland | tel. +358 20 7795 500 | sales@planmeca.com | www.planmeca.com

Images may contain optional items not included in standard delivery. Available configurations and features may have country or area specific variations.
Some products displayed above may not be available in all countries or areas. Rights for changes reserved.

Planmeca, All in one, Anatomat Plus, Cobra, Comfy, DentoVac, Digital perfection, Economat Plus, Elegant, Flexy, Mini-dent, Perio Fresh, PlanEasyMill, Planmeca 4D, Planmeca AINO, Planmeca ARA, Planmeca CAD/CAM, Planmeca Chair, Planmeca Clarify, Planmeca Compact, Planmeca Creo, Planmeca FIT, Planmeca Intra, Planmeca iRomexis, Planmeca Lumion, Planmeca Lumo, Planmeca Maximity, Planmeca Minea, Planmeca Minendo, Planmeca Minetto, Planmeca mRomexis, Planmeca Noma, Planmeca Olo, Planmeca Online, Planmeca PlanCAD, Planmeca PlanCAM, Planmeca PlanClear, Planmeca PlanID, Planmeca PlanMill, Planmeca Planosil, Planmeca PlanPure, Planmeca PlanScan, Planmeca PlanView, Planmeca ProCeph, Planmeca ProFace, Planmeca ProID, Planmeca ProMax, Planmeca ProModel, Planmeca ProOne, Planmeca ProScanner, Planmeca ProSensor, Planmeca ProX, Planmeca Romexis, Planmeca Serenus, Planmeca SingLED, Planmeca SmartGUI, Planmeca Solea, Planmeca Sovereign, Planmeca Ultra Low Dose, Planmeca Vision, Planmeca Verity, Planmeca Waterline Cleaning System, Planmeca Xtremity, Proline Dental Stool, ProTouch, Saddle Stool, SmartPan, SmartTouch, Trendy, and Ultra Relax are registered or non-registered trademarks of Planmeca in various countries.

