

# Maintenance and infection control

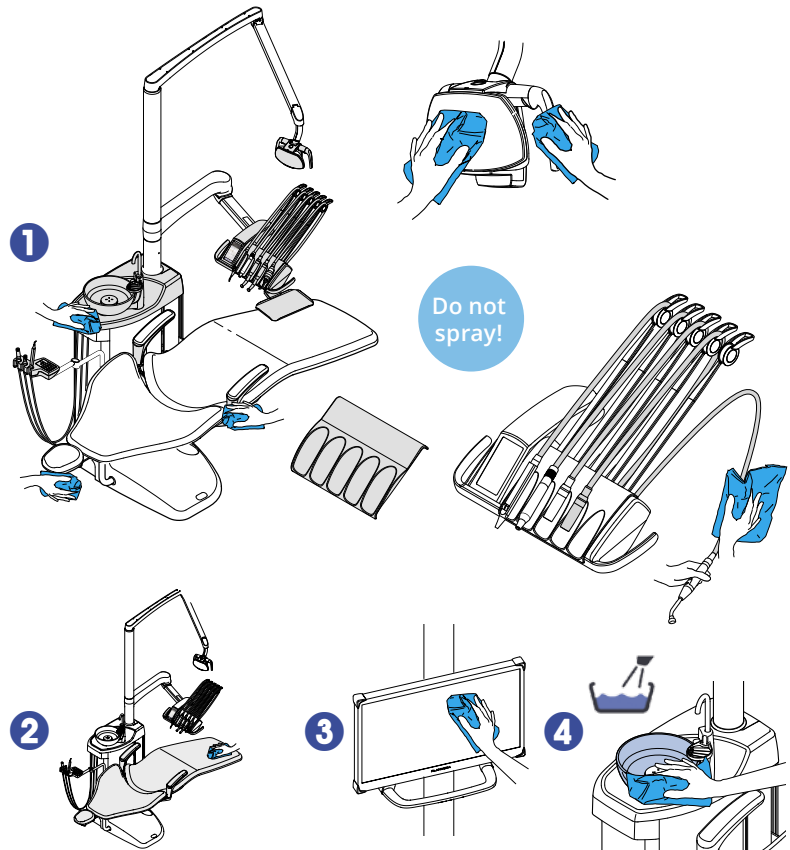
## After every patient

### Surfaces

- Wipe with Planmeca approved surface disinfectant:
  - metal parts of headrest
  - metal parts of armrests
  - protective fascia of the operating light
  - handles of the operating light
  - hygienic membrane
  - instrument hoses
  - instruments (see instrument instructions)
  - instrument console\*
  - balanced instrument arms
  - tray table
  - cuspidor top cover

Wipe the patient mirror of the operating light with a mild soap- and water solution.

- Wipe the upholstery with a mild soap- and water solution. Wipe with Planmeca approved upholstery disinfectant if needed.
- Wipe the monitor and the handle (see monitor instructions).
- Clean the bowl:
  - Pour a few drops of Planmeca approved suction disinfectant into the bowl and use a soft brush.
  - Rinse the bowl by pressing the bowl rinse button.
  - Wipe the outside of the bowl.



\*Before cleaning the instrument console, lock the touch screen.

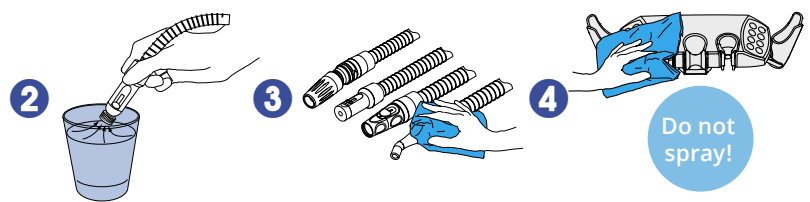
Touch screen is unlocked. Press to lock.

Touch screen is locked. Press and hold to unlock.

Before covering the instrument console and touch screen with a protective cover (optional), make sure they are dry.

### Suction system

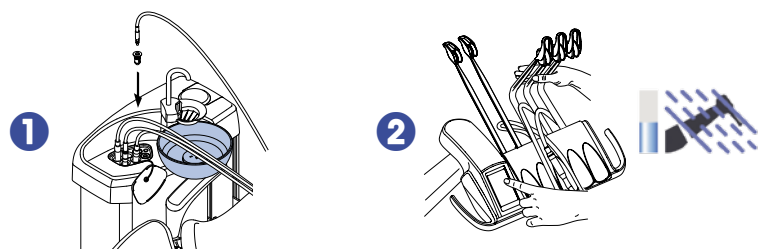
- Remove used aspirating tips.
- Rinse the suction tubes by aspirating one glass of water with each suction tube.
- Wipe the suction handpieces with Planmeca approved surface disinfectant.
- Wipe the suction holder with Planmeca approved surface disinfectant.



### Waterlines

#### Short flushing

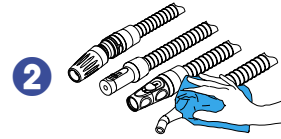
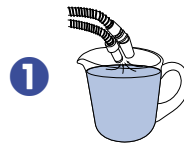
- Place all water consuming instruments into the flushing holder.
- Bend the instrument arms to an angle of at least 90° and start short flushing.



# In the morning

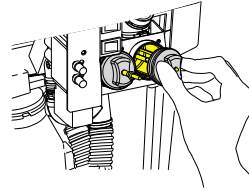
## Suction system

- 1 Rinse the suction tubes by aspirating 0.5 l of water with each suction tube.
- 2 Wipe the suction handpieces with Planmeca approved surface disinfectant.



## Filters

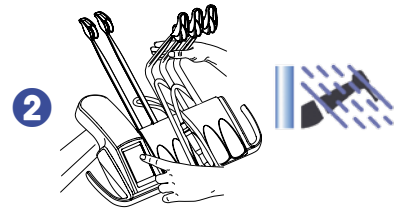
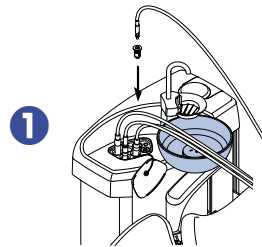
Clean the coarse filters.



## Waterlines

### Long flushing

- 1 Place all water consuming instruments into the flushing holder.
- 1 Bend the instrument arms to an angle of at least 90° and start long flushing.



## Planmeca approved disinfectants

Surface disinfectants*	Upholstery disinfectants	Upholstery treating agents	Suction disinfectants*	Water and waterline disinfectants
Dürr FD 322	Dürr FD 312	Dürr FD 360	Dürr Orotol Plus	Planmeca Planosil™
Dürr FD 333			Orbis Evacuation System Disinfection Concentrate (193087, 193088)	Planmeca PlanPure™
Orbis surface disinfection (MD121936, MD121937, MD125294, MD125295)				Alpro Bilpron
				With Planmeca WEK Green&Clean WK

\*Check carefully the cleaning and disinfection agent requirements of 3<sup>rd</sup> party devices to ensure that using the agents do not have adverse effect to the applicable warranty or other terms and conditions of 3<sup>rd</sup> party device manufacturers.

# After working day

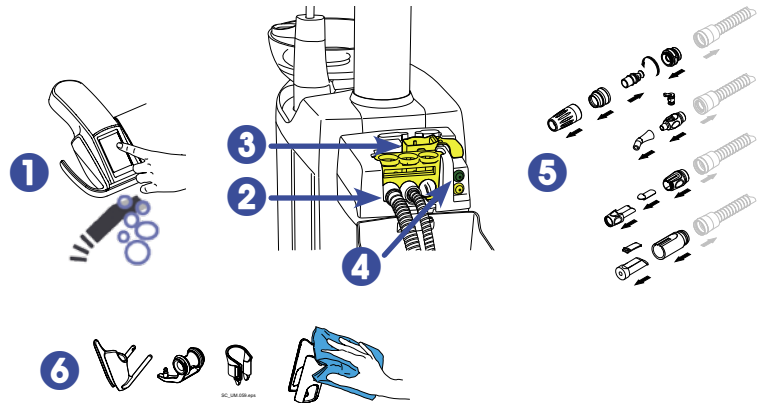
## Surfaces

Wipe the upholstery with Planmeca approved upholstery disinfectant.

## Suction system

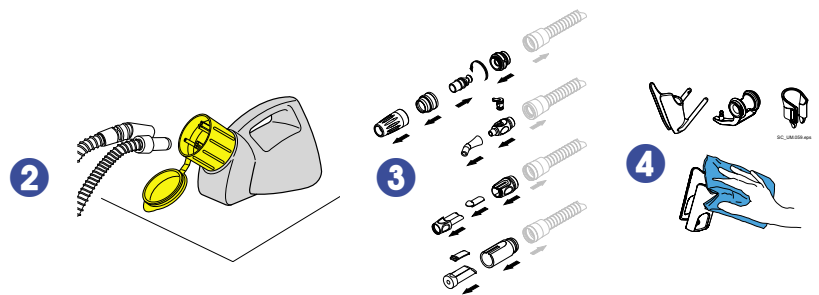
### Suction cleaning

- 1 Select Suction cleaning.
- 2 Insert the suction tubes into the suction tube cleaning holder.
- 3 Fill the dosing cubic with Planmeca approved suction disinfectant.
- 4 Press the green start button.
- 5 Disinfect the suction handpieces in a washer-disinfector.
- 6 Suction holder: Disinfect the individual holders in a washer-disinfector. Wipe the intraoral scanner holder with Planmeca approved surface disinfectant.



## Or

- 1 Mix 20 ml of Planmeca approved suction disinfectant with 1 l of water in Orocup.
- 2 Feed the mixture through the suction hoses using Orocup. Return the suction hoses immediately back to the holders.
- 3 Disinfect the suction handpieces in a washer-disinfector.
- 4 Suction holder: Disinfect the individual holders in a washer-disinfector. Wipe the intraoral scanner holder with Planmeca approved surface disinfectant.



## Filters

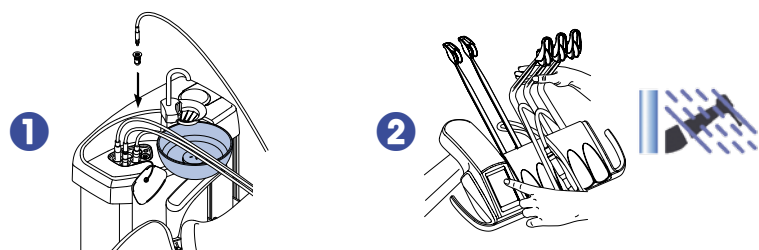
- 1 Empty, clean and disinfect the bowl filter in a washer-disinfector.  
*Attention! Do not empty the bowl filter to the drain.*
- 2 Remove the bowl and wash at max 65°C.



## Waterlines

### Long flushing

- 1 Place all water consuming instruments into the flushing holder.
- 2 Bend the instrument arms to an angle of at least 90° and start long flushing.

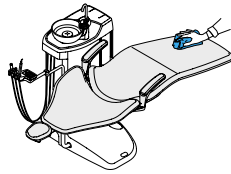


- 3 Switch off the unit.

# Weekly

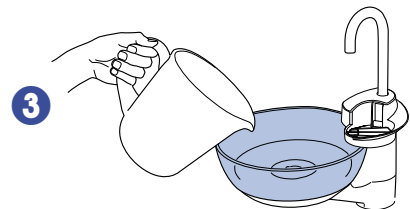
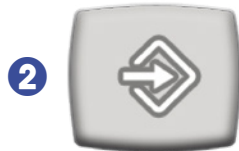
## Surfaces

Wipe the upholstery with Planmeca approved upholstery treating agent.



## Suction system

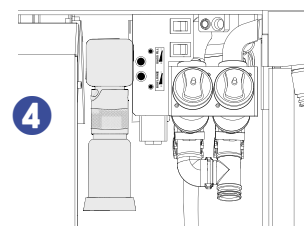
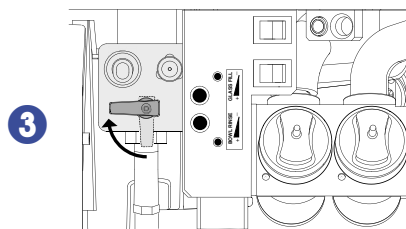
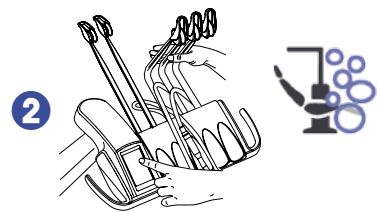
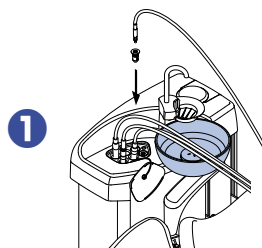
- 1 Mix 20 ml of Planmeca approved suction disinfectant with 1 l of water.
- 2 Press the programming button for about 5 s. The bowl valve opens. *Note, Dürr amalgam separators or VS/A systems only.*
- 3 Pour the mixture into the bowl.
- 4 Let the solution affect overnight.



## Waterlines

### Waterline cleaning

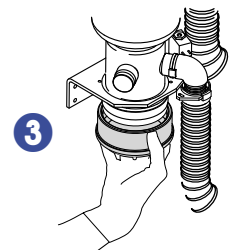
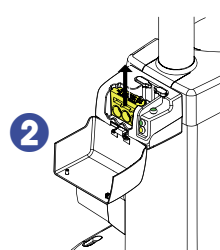
- 1 Place all water consuming instruments into the flushing holder.
- 2 Bend the instrument arms to an angle of at least 90° and start waterline cleaning.
- 3 Close the water tap.
- 4 Fill the container with Planmeca approved waterline disinfectant. Attach the container to the unit. Follow the instructions on the display.
- 5 The next morning, switch the unit on.
- 6 Follow the instructions on the display.



# Monthly

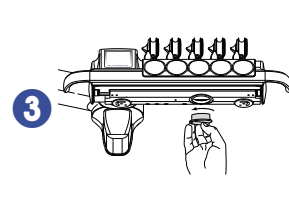
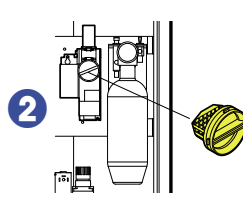
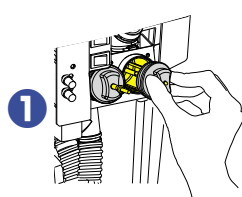
## Suction system and waterlines

- 1 Disinfect the instrument flushing holder in a washer-disinfector. Autoclave if needed.
- 2 Disinfect the suction tube cleaning holder in a washer-disinfector.
- 3 Empty the amalgam collector when 70% full (Microvac and WET systems only).



## Filters

- 1 Replace the coarse filters.
- 2 Empty the VS/A fine filter.
- 3 Empty the oil collector.



10029563\_14/05.2017/en