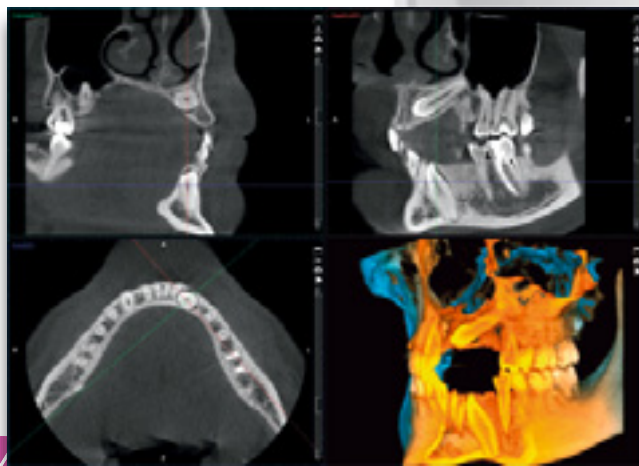


Never miss a shot with Planmeca CBCT units

Crystal clear
images



ProMax3DMid
ProFace

Crystal clear images free from noise and artefacts

Movement, metal artefacts, and small voxel sizes are generally recognised as challenges to CBCT image quality. With Planmeca CBCT units and their advanced image enhancement options, you can rise above these concerns and succeed every time. The options can either be selected preventively before imaging or utilised afterwards to achieve reliable results. The choice is yours!

New!

Movement artefact correction with Planmeca CALM™

- Iterative movement correction algorithm
- Eliminates the need for retakes
- Cancels the effects of patient movement
- Excellent when imaging more lively patients

Metal artefact reduction with Planmeca ARA™

- Reliable algorithm for artefact-free images
- Removes shadows and streaks caused by metal restorations and root fillings
- Tried and tested – the results of extensive scientific research

Noise removal with Planmeca AINO™

- Noise-free images without losing valuable details
- Allows lower exposure values by reducing noise
- Improves image quality when using small voxel sizes (e.g. in the endodontic imaging mode)
- Enabled by default when using the Planmeca **Ultra Low Dose™** imaging protocol

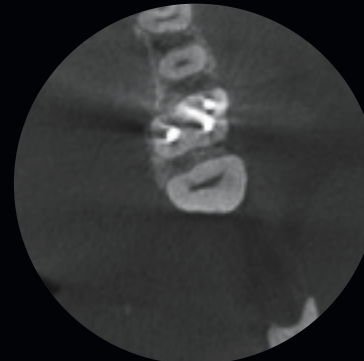
Without movement artefact correction



With the Planmeca CALM™
movement correction algorithm



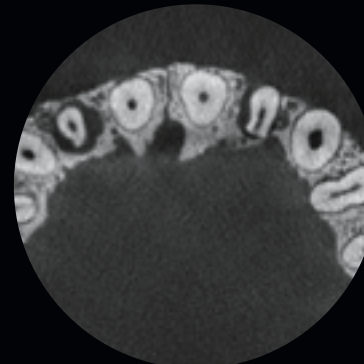
Without artefact removal



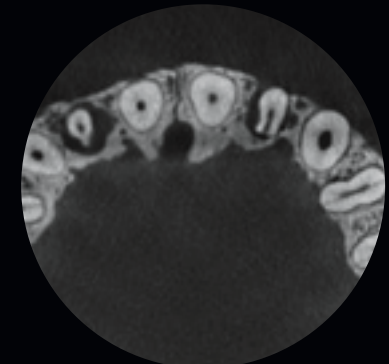
With the Planmeca ARA™
artefact removal algorithm



Without noise removal



With the Planmeca AINO™ noise filter



Planmeca ProMax® 3D family

– ideal CBCT units for all imaging needs

Planmeca ProMax® 3D is a product family consisting of exceptional all-in-one units. With three different types of three-dimensional imaging – as well as panoramic, extraoral bitewing and cephalometric imaging – these intelligent products can meet all your maxillofacial imaging needs.



Planmeca ProMax® 3D s
Ø 50 x 80 mm



Planmeca ProMax® 3D Classic
Ø 80 x 80 mm



Planmeca ProMax® 3D Plus
Ø 160 x 90 mm



Planmeca ProMax® 3D Mid
Ø 200 x 170 mm



Planmeca ProMax® 3D Max
Ø 230 x 260 mm

PLANMECA

Asentajankatu 6 | 00880 Helsinki | Finland | tel. +358 20 7795 500 | sales@planmeca.com | www.planmeca.com

Images may contain optional items not included in standard delivery. Available configurations and features may have country or area specific variations. Some products displayed above may not be available in all countries or areas. Rights for changes reserved.

Planmeca, All in one, Anatomat Plus, Cobra, Comfy, DentreVac, Digital perfection, Economat Plus, Elegant, Flexy, Mini-dent, Perio Fresh, PlanEasyMill, Planmeca 4D, Planmeca AINO, Planmeca ARA, Planmeca CAD/CAM, Planmeca CALM, Planmeca Chair, Planmeca Clarify, Planmeca Compact, Planmeca Creo, Planmeca Emerald, Planmeca FIT, Planmeca Intra, Planmeca iRomexis, Planmeca Lumion, Planmeca Lumo, Planmeca Maximity, Planmeca Minea, Planmeca Minendo, Planmeca Minetto, Planmeca mRomexis, Planmeca Noma, Planmeca Olo, Planmeca Online, Planmeca PlanCAD, Planmeca PlanCAM, Planmeca PlanClear, Planmeca PlanID, Planmeca PlanMill, Planmeca Planosil, Planmeca PlanPure, Planmeca PlanScan, Planmeca PlanView, Planmeca ProCeph, Planmeca ProFace, Planmeca ProLED, Planmeca ProID, Planmeca ProMax, Planmeca ProModel, Planmeca ProOne, Planmeca ProScanner, Planmeca ProSensor, Planmeca ProX, Planmeca Romexis, Planmeca Serenus, Planmeca SingLED, Planmeca SmartGUI, Planmeca Solea, Planmeca Sovereign, Planmeca Ultra Low Dose, Planmeca Vision, Planmeca Viso, Planmeca Verity, Planmeca Waterline Cleaning System, Planmeca Xtremity, Proline Dental Stool, ProTouch, Saddle Stool, SmartPan, SmartTouch, Trendy, and Ultra Relax are registered or non-registered trademarks of Planmeca in various countries.

