

Planmeca endodontic imaging – a new era in precision

High-
resolution
images with
a voxel size of
75 μm



Perfect visualisation of even the finest details

Our new endodontic imaging mode provides perfect visualisation of even the finest anatomical details. Available for all **Planmeca ProMax® 3D** family units, this advanced imaging mode is an ideal choice for endodontics and other cases with small details.

New endodontic imaging mode

- Extremely high resolution with 75 µm voxel size
- Perfect for the smallest details, enables precise diagnostics and treatment planning

Noise-free images

Intelligent **Planmeca AINO™** 3D noise filter removes noise from CBCT images without losing valuable details.

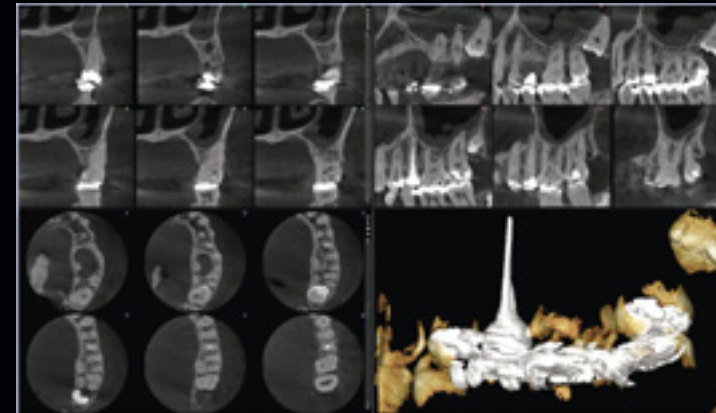
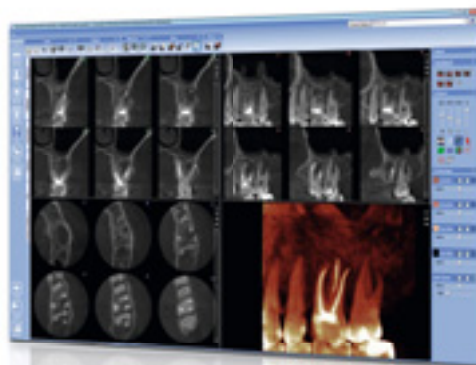
Artifact-free images

Planmeca ARA™ artifact removal algorithm efficiently removes shadows and streaks – caused by e.g. metal and root fillings – from the 3D image.



**Comprehensive
Planmeca Romexis® software**

Offers versatile tools for endodontic diagnostic and treatment planning needs, such as true measurements and 3D visualisation of root canals



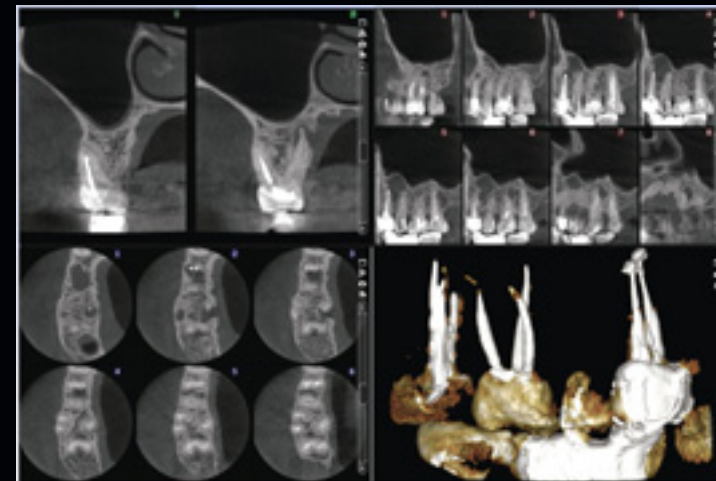
**Planmeca
ProMax® 3D s**

FOV Ø 50 x 50 mm
Voxel size 75 µm

D.25 is root canal treated, incomplete filling and a constricted canal on its apical side. No signs of inflammation in the apical area of the root; instead, a distopalatal fusion at the margin of the root's apical and middle third that must originate in the side canal of the root even though the canal does not appear in the sections, not even with the smallest voxel size.

Clear mucosal swelling can be detected on the maxillary sinus side that apparently is of odontogenic (d.25) origin.

M. Mattila, 2013



**Planmeca
ProMax® 3D Mid**

FOV Ø 40 x 50 mm
Voxel size 75 µm

D.14 has a single root but two canals, it is resected and has retrograde amalgam fillings. A large cyst recurrence that has distended the base of the maxillary sinus is seen in the apical area of the roots.

D.16 is root canal treated. A large fusion is found distopalatally situated in the apical area of the palatal root, and it has been resorbed in the palatal cortex of the alveolar ridge. The root has a slightly incomplete filling and unfilled canal can be seen on its apical side. The apical part of the Db root is severely curved to the distal direction and a fusion can be detected in the apical area. The root includes a filling that is nearly full length but nevertheless seems weak. No inflammation in the apical area of the Mb root.

M. Mattila, 2013

Planmeca ProMax® 3D family

– the optimal 3D unit for every imaging need



Planmeca ProMax® 3D s

Ø 50 x 80 mm

Planmeca ProMax® 3D Classic

Ø 80 x 80 mm

Planmeca ProMax® 3D Plus

Ø 160 x 90 mm

Planmeca ProMax® 3D Mid

Ø 200 x 170 mm

Planmeca ProMax® 3D Max

Ø 230 x 260 mm

True all-in-one units

- CBCT imaging
- Multi-layered 2D **SmartPan™** panoramic imaging
- Cephalometric imaging
- **Planmeca ProFace®** 3D face photo

Ideal patient support

- The adjustable patient support keeps the patient firmly and comfortably in place
- Guarantees high-quality images without artefacts caused by movement

CBCT applications in endodontics:

- Assessment of endodontic treatment complications
- Diagnosis of periapical pathosis
- Root canal system anomalies
- Determination of root curvature
- Trauma diagnosis: root fractures, luxation, displacement of teeth and alveolar fractures
- Localisation of root resorption
- Determination of exact root apex location in presurgical planning

PLANMECA

Asentajankatu 6 | 00880 Helsinki | Finland | tel. +358 20 7795 500 | sales@planmeca.com | www.planmeca.com

Images may contain optional items not included in standard delivery. Available configurations and features may have country or area specific variations. Some products displayed above may not be available in all countries or areas. Rights for changes reserved.

Planmeca, All in one, Anomat Plus, Cobra, Comfy, DentreVac, Digital perfection, Economat Plus, Elegant, Flexy, Mini-dent, Perio Fresh, PlanEasyMill, Planmeca AINO, Planmeca ARA, Planmeca CAD/CAM, Planmeca Chair, Planmeca Clarify, Planmeca Compact, Planmeca Intra, Planmeca iRomexis, Planmeca Lumion, Planmeca Maximity, Planmeca Minea, Planmeca Minendo, Planmeca Minetto, Planmeca mRomexis, Planmeca Noma, Planmeca Online, Planmeca PlanCAD, Planmeca PlanCAM, Planmeca PlanClear, Planmeca PlanMill, Planmeca PlanScan, Planmeca Planosil, Planmeca ProCeph, Planmeca ProFace, Planmeca ProID, Planmeca ProMax, Planmeca ProModel, Planmeca ProOne, Planmeca ProScanner, Planmeca ProSensor, Planmeca ProX, Planmeca Romexis, Planmeca Serenus, Planmeca SingLED, Planmeca Sovereign, Planmeca Ultra Low Dose, Planmeca Vision, Planmeca Verity, Planmeca Waterline Cleaning System, Planmeca Xtremity, Proline Dental Stool, ProTouch, Saddle Stool, SmartPan, SmartTouch, Trendy and Ultra Relax are registered or non-registered trademarks of Planmeca in various countries.

10036488/0215/en

