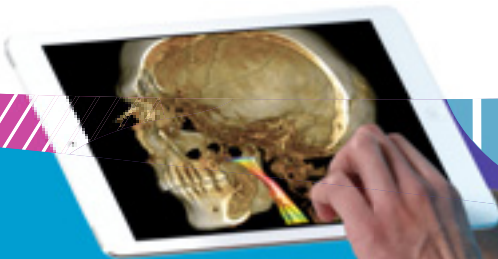
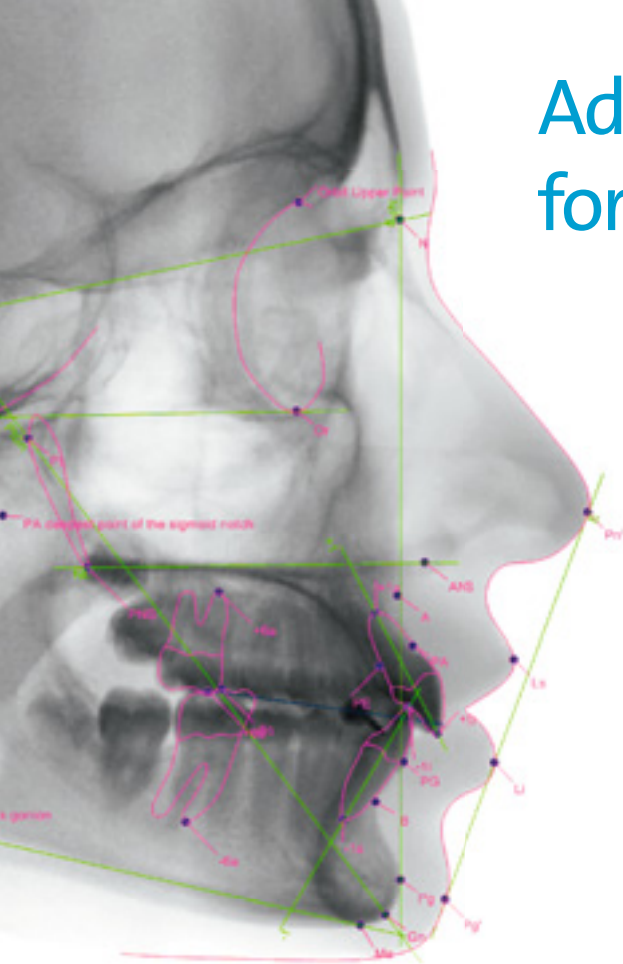


Advanced tools for orthodontics



PLANMECA

A complete solution for orthodontics

One unit – one software



Planmeca ProMax® unit



Panoramic • Cephalometric • CBCT image • 3D photo • 3D model scan

Planmeca offers a complete solution for all your orthodontic needs. Our **Planmeca ProMax**® 2D and 3D X-ray units together with the advanced **Planmeca Romexis**® imaging software create a powerful combination – providing you with all the necessary clinical information and tools for orthodontic treatment planning and analysis.



Planmeca Romexis® software



Planmeca ProMax® 3D family

Optimal 3D units for every need

Planmeca ProMax® 3D is a product family consisting of exceptional all-in-one units that capture everything from CBCT images to extraoral bitewings and panoramic and cephalometric images. With the innovative 3D face photo and 3D model scanning features, a comprehensive set of diagnostic records for orthodontic treatment planning is provided.

Adjustable
field of view
and dose

CBCT applications for orthodontics

- Visualisation of impacted teeth
- Assessment of an unerupted tooth position
- Identification of root resorption and orientation
- Visualisation of supernumerary teeth
- Evaluation of boundary conditions
- Cleft palate patients
- Orthognatic surgery planning
- TMJ, airways and more

The Braces imaging protocol

Our special Braces imaging protocol offers optimised exposure settings for imaging patients with brackets. The acquired images can be utilised for designing braces.

Available in Planmeca ProMax® 3D Classic, Planmeca ProMax® 3D Mid and Planmeca ProMax® 3D Max.



5x8 cm

Planmeca ProMax® 3D s



8x8 cm

Planmeca ProMax® 3D Classic



16x9 cm

Planmeca ProMax® 3D Plus



20x17 cm

Planmeca ProMax® 3D Mid



23x26 cm

Planmeca ProMax® 3D Max

Planmeca Ultra Low Dose™

Pioneering low dose 3D imaging

Planmeca ProMax® 3D units offer a unique Planmeca Ultra Low Dose™ imaging protocol that enables CBCT imaging with an even lower patient radiation dose than standard 2D panoramic imaging.

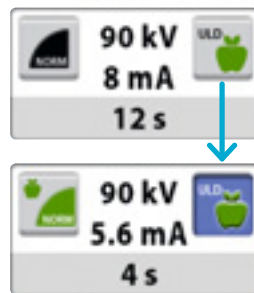
This intelligent protocol can be used with all voxel sizes and in all imaging modes from Normal to Endodontic. Using the **Planmeca Ultra Low Dose™** protocol reduces the effective patient dose by an average of 77% without a statistical reduction in image quality*.



Ideal for many clinical cases

The Planmeca Ultra Low Dose protocol has proven to be ideal for many clinical cases.

- Orthodontics:
 - Defining the amount of bone around the root
 - Localising unerupted and impacted teeth before orthodontic treatment
 - Defining orthodontic landmarks for cephalometric analysis
- Post-operative and follow-up images in maxillofacial surgery
- Airway studies
- Sinus studies
- Implant planning



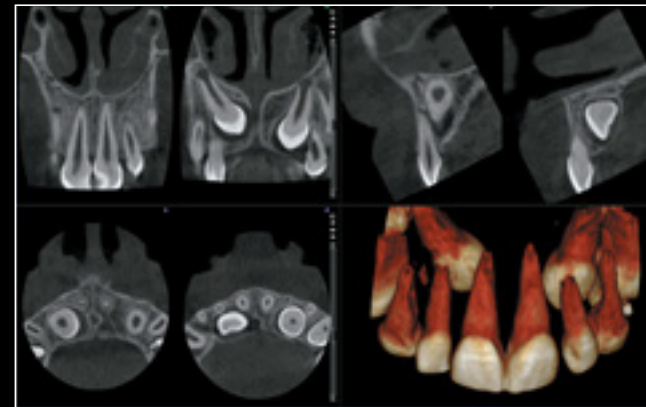
* Study of Orthodontic Diagnostic FOVs Using Low Dose CBCT protocol (Ludlow, John Barrett and Koivisto, Juha).

planmeca.com/ULD-poster



“The Planmeca Ultra Low Dose protocol has changed 3D imaging completely”

Prof. Dr. Axel Bumann
 DDS, PhD, Orthodontist, Oral surgeon, Oral and Maxillofacial Radiology,
 MESANTIS® 3D DENTAL-RADIOLOGICUM



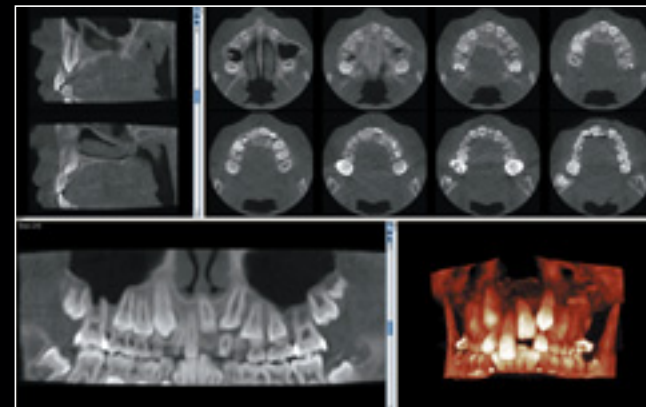
Planmeca ProMax® 3D Classic

- FOV Ø 40 x 50 mm / Voxel size 150 µm
- Effective patient dose 14.4 µSv



Planmeca ProMax® 3D Mid

- FOV Ø 200 x 170 mm / Voxel size 600 µm
- Effective patient dose 29.2 µSv



Planmeca ProMax® 3D Max

- FOV Ø 85 x 50 mm / Voxel size 400 µm
- Effective patient dose 4.0 µSv

Standard 2D panoramic effective patient dose is approximately 15 µSv.

Planmeca ProFace®

Planmeca ProFace® is a unique 3D face photo system available for all of our 3D X-ray units. The realistic 3D photo – acquired with or without a CBCT image – is a highly effective tool for orthodontic treatment planning and radiation-free follow-up.

First X-ray
integrated
face camera



Orthodontic applications

- Patient education and documentation
- Treatment follow-up
- Before and after comparisons
- Facial symmetry analysis
- Automatic generation of 2D orthodontic facial views from the 3D photo
- Evaluation of bone/soft tissue relation
- Orthognatic surgery planning
- 100 % radiation-free 3D photo



3D model scanning

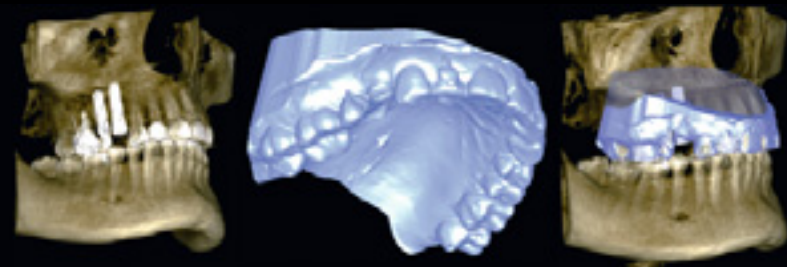
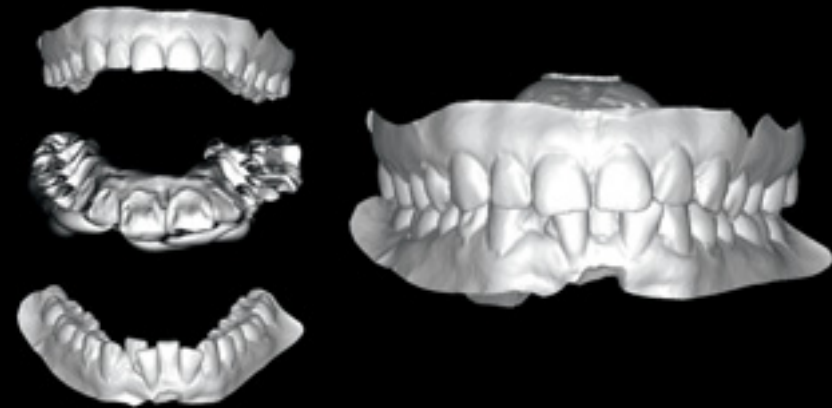
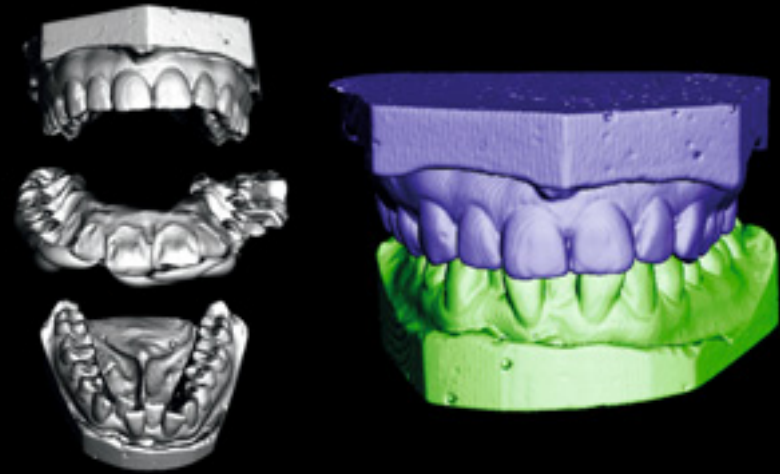
You can use all units in the **Planmeca ProMax® 3D** family to scan both impressions and plaster casts. The digitised models are immediately available and stored in the **Planmeca Romexis®** software for orthodontic analysis and treatment planning. Scanned 3D models can be superimposed on to CBCT data for full diagnostic information.



Scanning a plaster cast to a digital model



Scanning an impression to a digital model

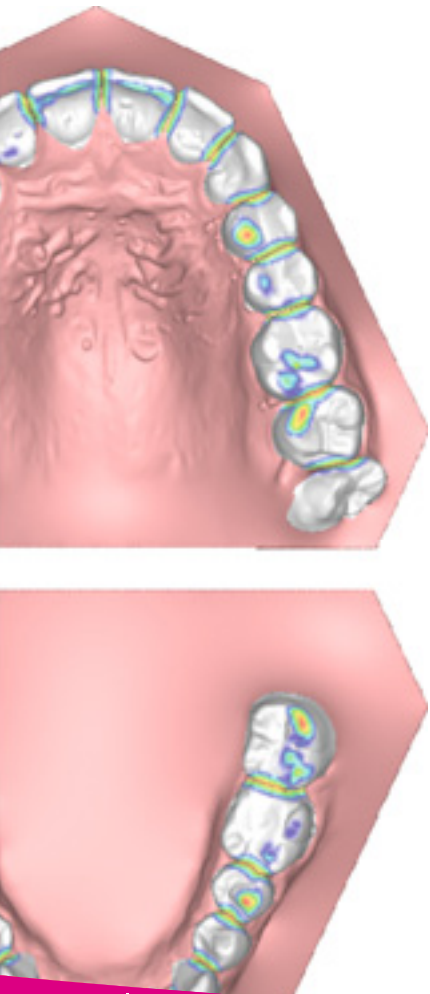


Planmeca Romexis® 3D Ortho Studio

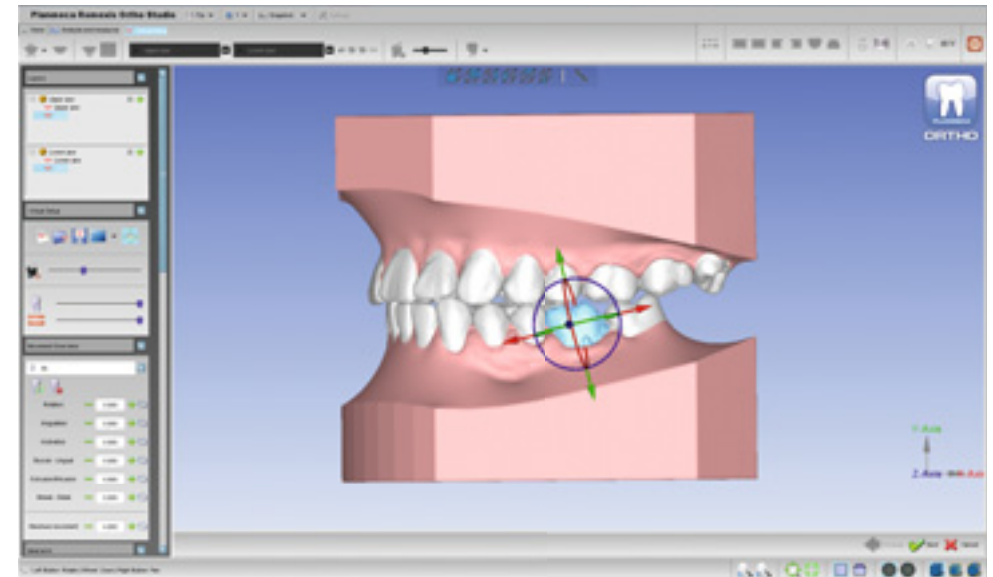
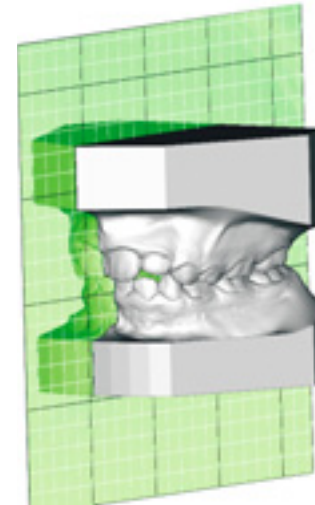
Innovative applications
for orthodontists and dental laboratories



*Planmeca Romexis® 3D Ortho Studio provides innovative tools for orthodontists and dental laboratories. Our advanced module is designed for the examination and analysis of digital dental models scanned with **Planmeca ProMax® 3D** X-ray units or the **Planmeca PlanScan®** intraoral scanner – and also for planning orthodontic treatments in 3D.*



- Dental cast analysis tools for the examination of space, tooth size, cross sections and occlusions
- Attachment of a virtual base creates a result that looks like a traditional plaster cast
- Establish staged treatment plans by moving the segmented teeth in the virtual setup
- Series of digital dental models from initial setup to the target setup
- Export digital dental models in an STL format for 3D printing, design and manufacturing of custom appliances
- Compatible with the Windows operating system



Planmeca ProMax® 2D

Intelligent 2D imaging for all your orthodontic needs

Planmeca ProMax® is a complete maxillofacial imaging system. It provides world-leading extraoral imaging with its unique design details and excellent image quality.



- Instant and precise 2D imaging with upgradeability to 3D X-ray unit
- Widest selection of imaging programs: panoramic, cephalometric, bitewing, TMJ and tomography



Advanced
one-shot
cephalostat

Two cephalostat options available for Planmeca ProMax®

Scanning Planmeca ProMax® cephalostat

- Exceptional flexibility in image formats, with field sizes of up to 30 x 27 cm

One-shot Planmeca ProCeph™ cephalostat

- Image sizes from 18 x 25 cm to 30 x 25 cm

Planmeca Romexis®

World-leading imaging software

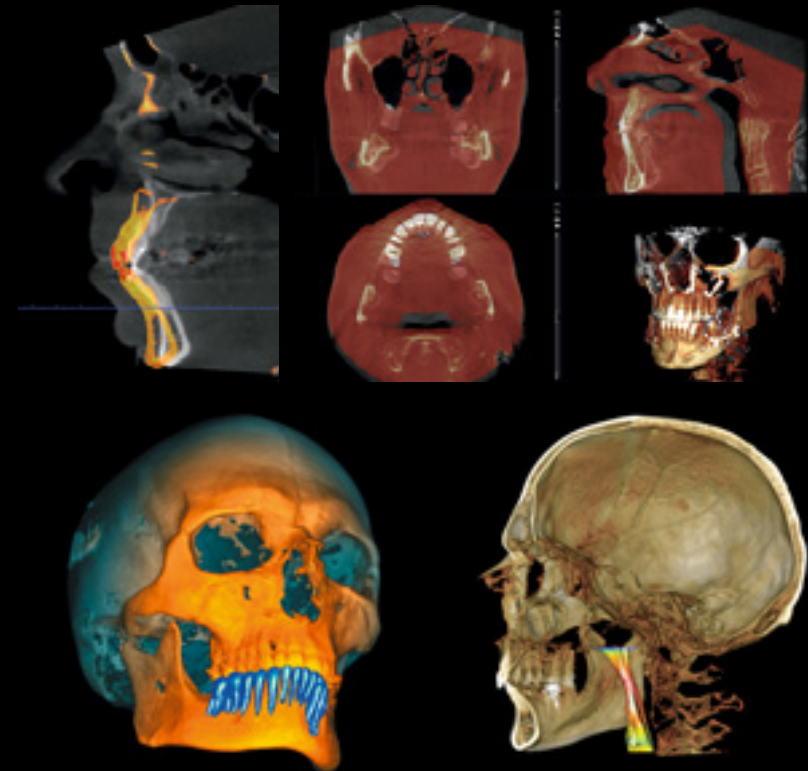
Planmeca Romexis® is an advanced, easy-to-use software suite providing a rich set of tools to meet the imaging requirements set by any dental facility – from a small clinic to a large hospital. It supports the most versatile range of 2D and 3D imaging modalities.



Download the **Planmeca mRomexis™** application for iOS and Android from the App Store or Google Play.



- The most comprehensive imaging software for 3D and 2D imaging, supporting:
 - CBCT images, 3D photos, STL surface data
 - Panoramic, cephalometric and intraoral images and photos
- Superimposing before and after CBCT images
- Segmenting teeth from CBCT data and utilising them in treatment planning
- Visualising and measuring airways
- Creating a virtual cephalometric image from a CBCT image.
- Mac OS and Windows support
- The **Planmeca Romexis® Cloud** service and mobile application **Planmeca mRomexis™** allow sharing images and viewing results anywhere



Tampere University Hospital, Medical Imaging Center, Finland

Create your virtual patient with Planmecca.

3X
3D

PLANMECCA

Asentajankatu 6 | 00880 Helsinki | Finland | tel. +358 20 7795 500 | sales@planmecca.com | www.planmecca.com

Images may contain optional items not included in standard delivery. Available configurations and features may have country or area specific variations.
Some products displayed above may not be available in all countries or areas. Rights for changes reserved.

Planmecca, All in one, Anatomat Plus, Cobra, Comfy, DentreVac, Digital perfection, Economat Plus, Elegant, Flexy, Mini-dent, Perio Fresh, PlanEasyMill, Planmecca 4D, Planmecca AINO, Planmecca ARA, Planmecca CAD/CAM, Planmecca Chair, Planmecca Clarify, Planmecca Compact, Planmecca Intra, Planmecca iRomexis, Planmecca Lumion, Planmecca Lumo, Planmecca Maximity, Planmecca Minea, Planmecca Minendo, Planmecca Minetto, Planmecca mRomexis, Planmecca Noma, Planmecca Online, Planmecca PlanCAD, Planmecca PlanCAM, Planmecca PlanClear, Planmecca PlanMill, Planmecca Planosil, Planmecca PlanPure, Planmecca PlanScan, Planmecca ProCeph, Planmecca ProFace, Planmecca ProID, Planmecca ProMax, Planmecca ProModel, Planmecca ProOne, Planmecca ProScanner, Planmecca ProSensor, Planmecca ProX, Planmecca Romexis, Planmecca Serenus, Planmecca SingLED, Planmecca SmartGUI, Planmecca Sovereign, Planmecca Ultra Low Dose, Planmecca Vision, Planmecca Verity, Planmecca Waterline Cleaning System, Planmecca Xtremity, Proline Dental Stool, ProTouch, Saddle Stool, SmartPan, SmartTouch, Trendy and Ultra Relax are registered or non-registered trademarks of Planmecca in various countries.

10029531/1216/en

